

Who Cares About Food Security?

Rev Canon Alan Robson

Agricultural Chaplain

Lincolnshire Rural and Agricultural Chaplaincy

chaplains@lrac.org.uk

www.lrac.org.uk

Amy Thomas

Head of Charity

Lincolnshire Rural Support Network

amy.thomas@lrsn.co.uk

www.lrsn.co.uk





A lifeline for Lincolnshire's farming and rural folk



Comforter

...a person who consoles - brings relief in affliction



Catalyst

...a person who precipitates change



Champion

...a person who fights and argues for a cause



Connector

...a person who creates the link between organisations and people

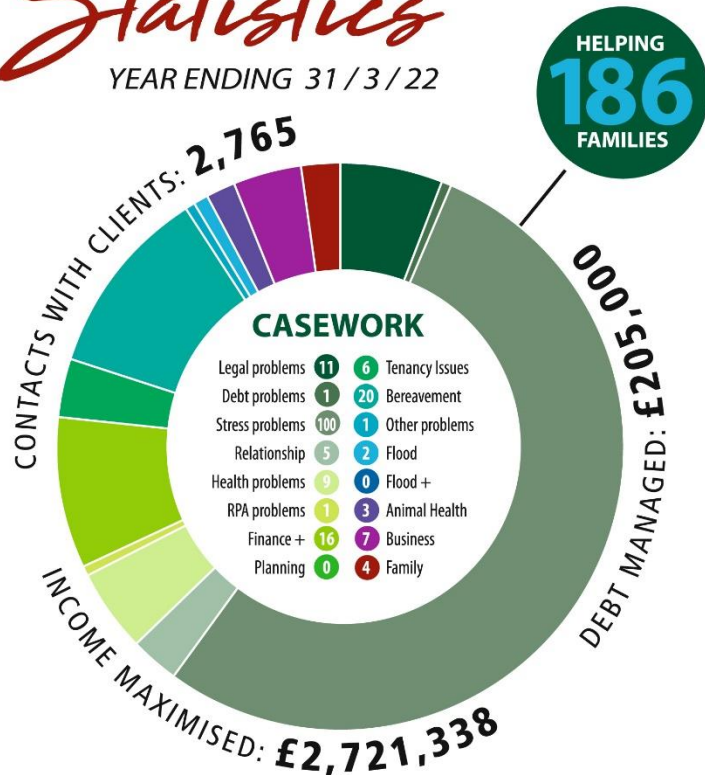


LRSN Casework



Statistics

YEAR ENDING 31 / 3 / 22



Statistics

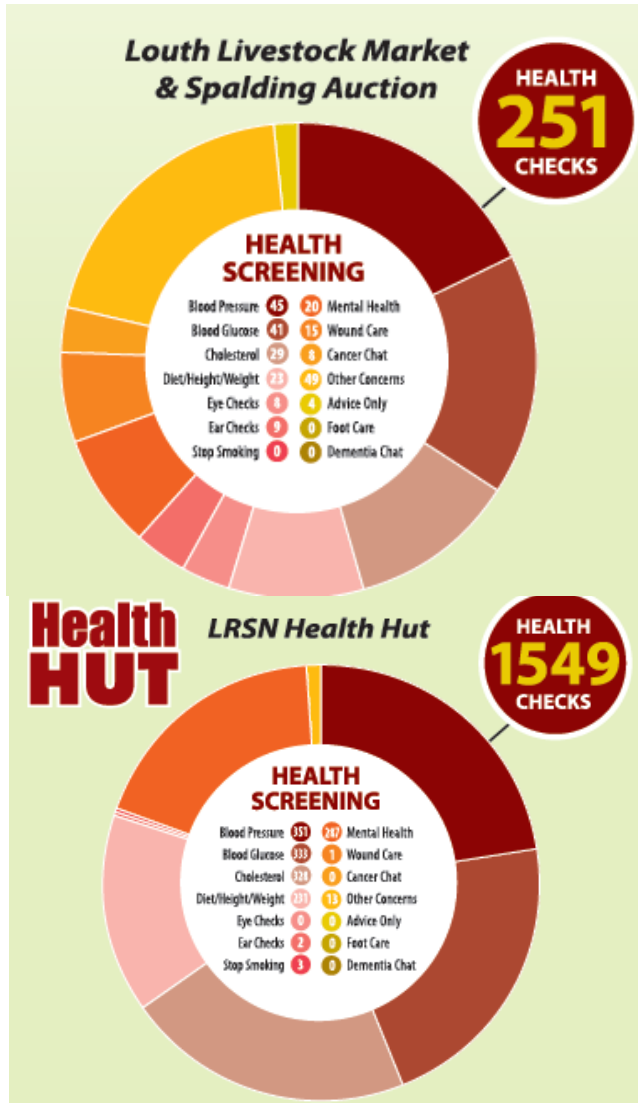
1st April - 31st September 2022



Every £1 invested generates a social value of

£16.93

LRSN Health Screening



Wider Wellbeing Offer



Our nurses, here for you

Book online at www.lrsn.co.uk
or phone us on 07497 093444



“I never thought talking to a stranger would be so helpful”



Working Together



LRSN and LRAC are separate independent charities, who recognise the benefit of working together to deliver support to people in Lincolnshire's agricultural community.

