



The Open
University

The joys and challenges of the changing coastal idiom, from fishing, to Brexit, to staycations

Dr Vicky Johnson

Staff Tutor and Senior Lecturer in Geography

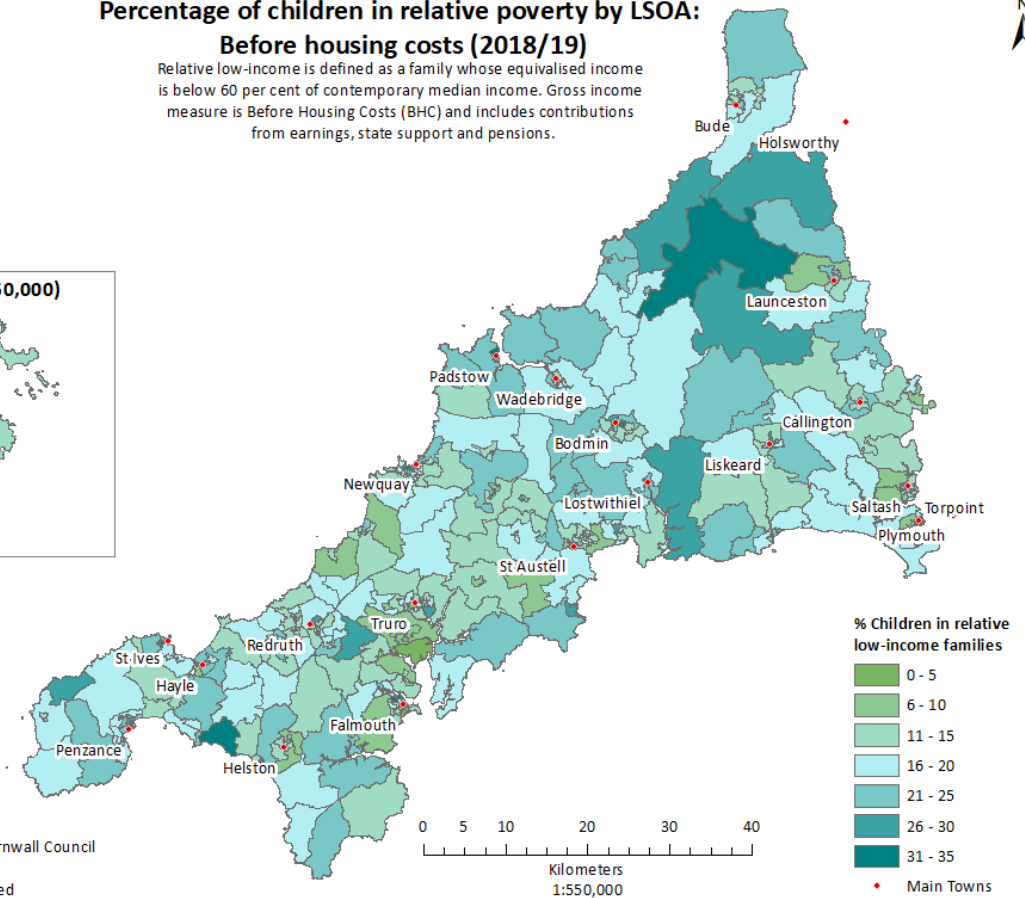


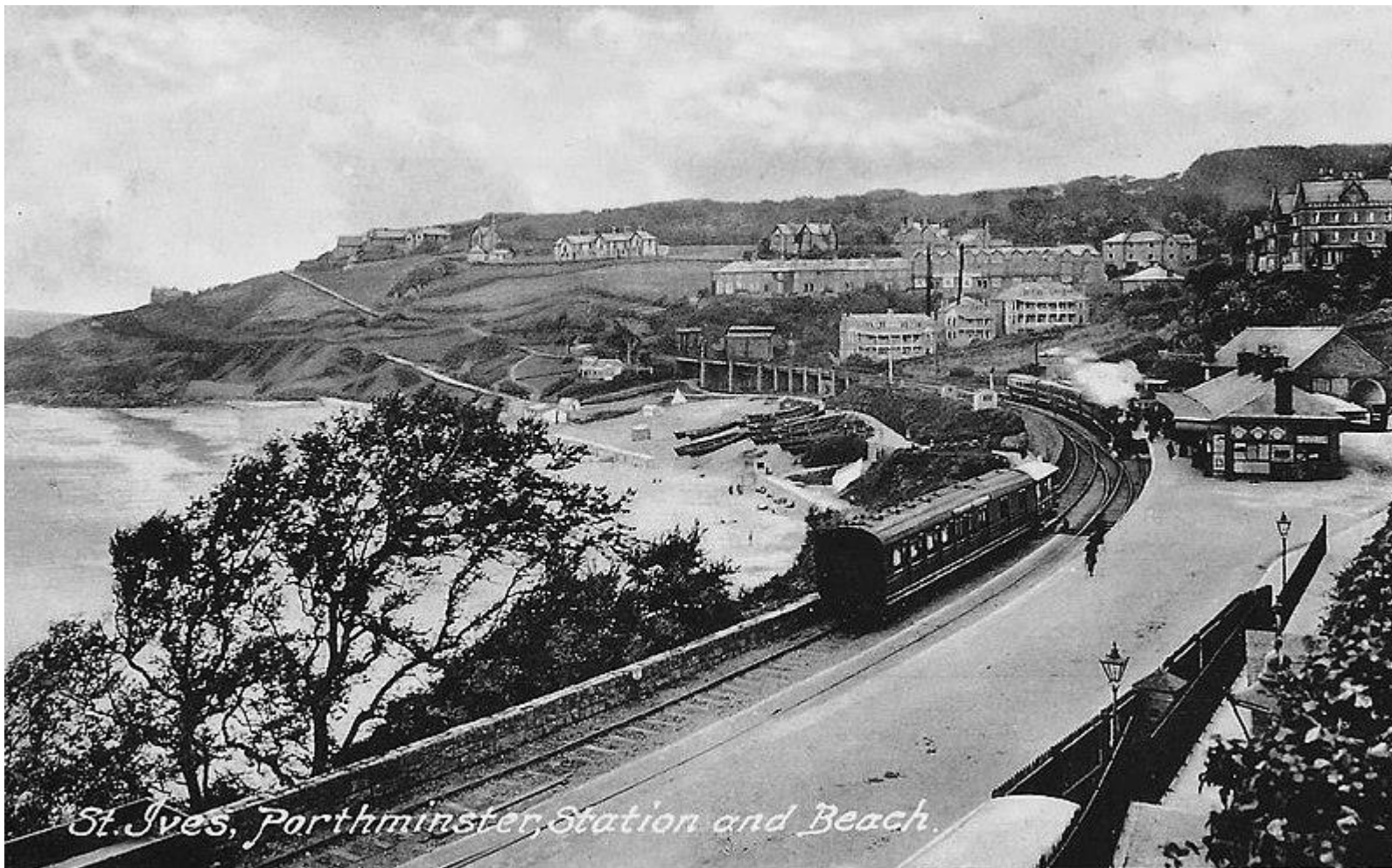
The Open
University

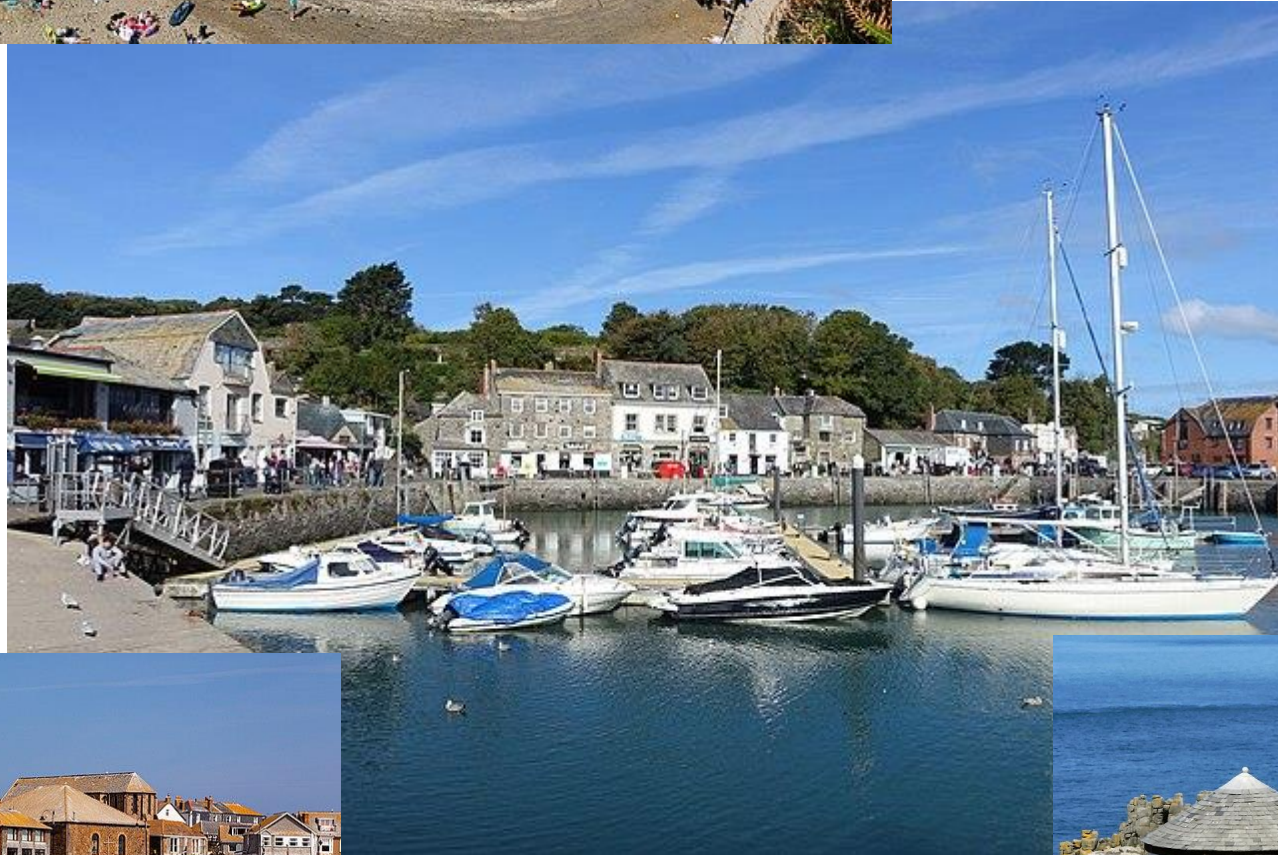


Percentage of children in relative poverty by LSOA: Before housing costs (2018/19)

Relative low-income is defined as a family whose equivalised income is below 60 per cent of contemporary median income. Gross income measure is Before Housing Costs (BHC) and includes contributions from earnings, state support and pensions.









The Tate, St Ives



[Home Page](#) / [Council News](#) / [Communities and Housing](#) / Cornwall delivers second-highest number of affordable homes in England

Cornwall delivers second-highest number of affordable homes in England

Number of 'affordable' homes being built in Cornwall at its lowest in five years



There are as many families waiting for social housing in Cornwall as there are holiday lets

The number of second homes in Cornwall exploded during the pandemic, pricing local people out of housing, local leaders say.

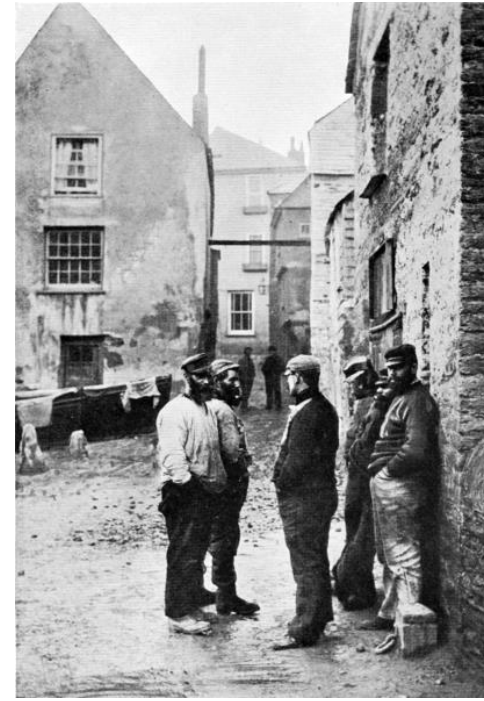
SARAH WILSON | 11 Feb 2022



Local leaders say the high saturation of holiday lets is destroying communities. Image: Pixabay

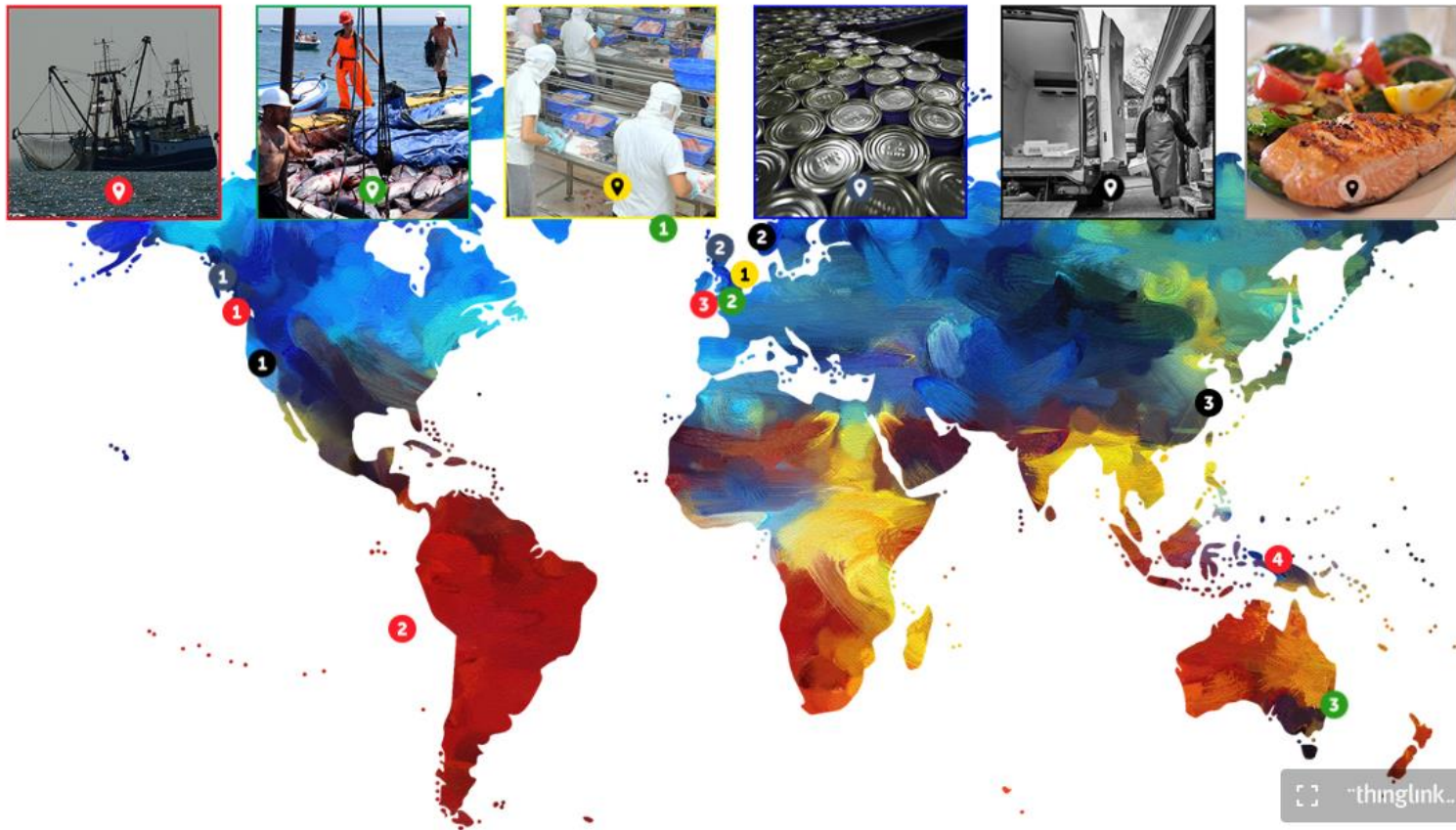
SHARE

The number of families waiting for social housing in Cornwall is now as high as the number of holiday lets, new figures show.

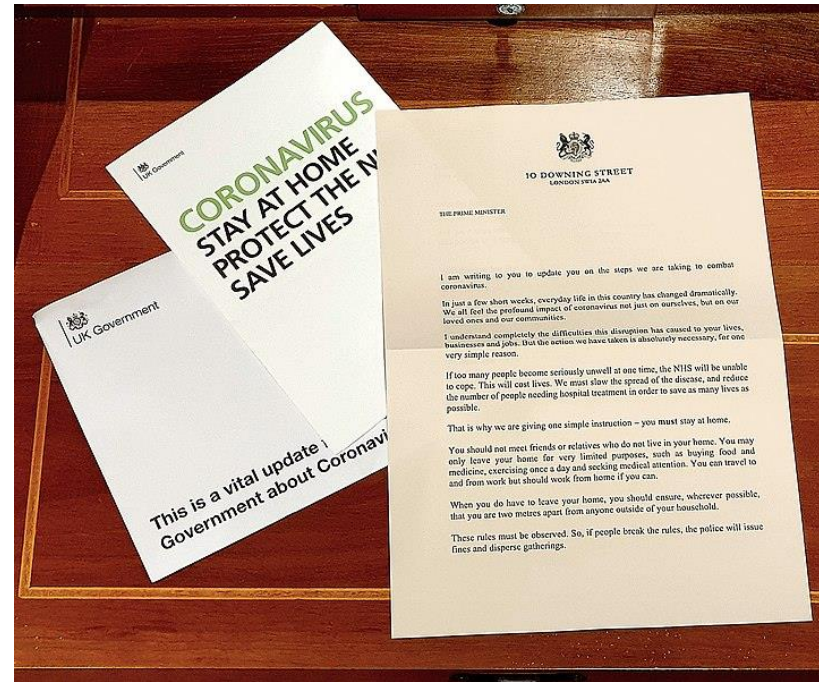


The oldest Chip Shop in the world?





[How the fish we eat makes it onto our plates - OpenLearn - Open University](#)





The Open University





The Open
University

Thank you for listening

Dr Vicky Johnson vicky.johnson@open.ac.uk